

## **Wendron, Helston. TR13 0JB**

**£820 pcm**



### **Full Description**

LET SUBJECT TO REFERENCING - A superb stone cottage set in a delightful courtyard on a working sheep farm. uPVC double glazing. Oil central heating. NO SHARERS, STUDENTS, SMOKERS, PETS OR CHILDREN. Long Let available now. EMAIL AGENT FOR AN APPLICATION FORM. Affordability applies. Open Plan Lounge/Kitchen/Dining Room. Double Bedroom. Spacious Shower Room/WC. Lawned garden. Allocated parking space. Water & sewage £50pcm extra.

### **Contact Us**

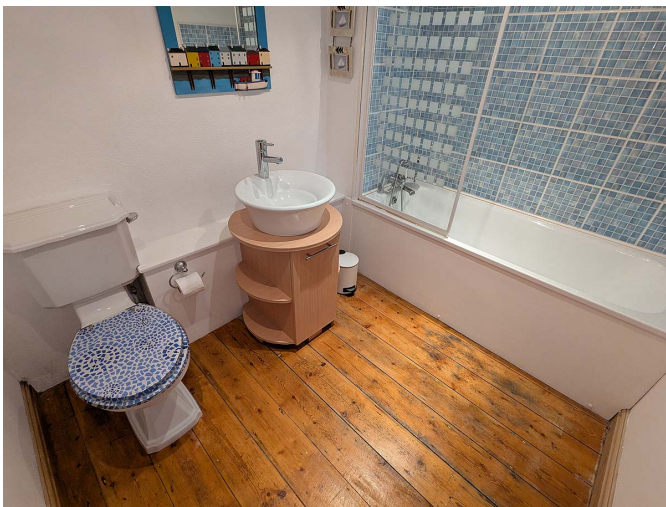
#### **Real Estates (Cornwall)**

58 West End, Redruth, Cornwall, TR15 2SQ

T: 01209 215566

E: [property@realestates.co.uk](mailto:property@realestates.co.uk)









Energy Efficiency Rating		
	Current	Potential
Very energy efficient - lower running costs		
(92-100) <b>A</b>		112
(81-91) <b>B</b>		
(69-80) <b>C</b>		
(55-68) <b>D</b>	68	
(39-54) <b>E</b>		
(21-38) <b>F</b>		
(1-20) <b>G</b>		
Not energy efficient - higher running costs		
<b>England, Scotland &amp; Wales</b> EU Directive 2002/91/EC 