

## **Lanner, Redruth TR16 5TJ**

**£995 pcm**



### **Full Description**

LET - Converted from an old piggery, this superb semi-detached property has extensive views over the surrounding countryside. Easy access with no steps on the ground floor. Double Glazing. Central Heating. Long Let. STRICTLY NO SHARERS, SMOKERS, STUDENTS OR PETS. Maximum of two children. Affordability applies. Entrance Hallway. Open Plan Living Area. Fitted Kitchen Area. Ground Floor Bedroom. Shower Room/WC. Two further Upstairs Bedrooms. Bathroom/WC/Shower. Enclosed Gardens with Patio. Ample Parking.

### **Contact Us**

#### **Real Estates (Cornwall)**

58 West End, Redruth, Cornwall, TR15 2SQ

T: 01209 215566

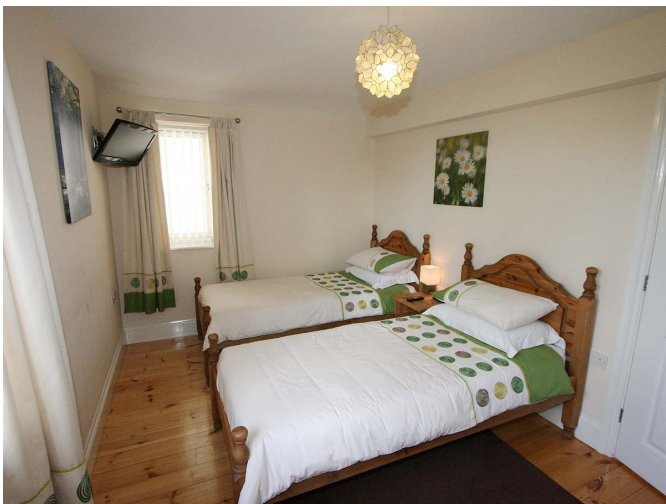
E: [property@realestates.co.uk](mailto:property@realestates.co.uk)





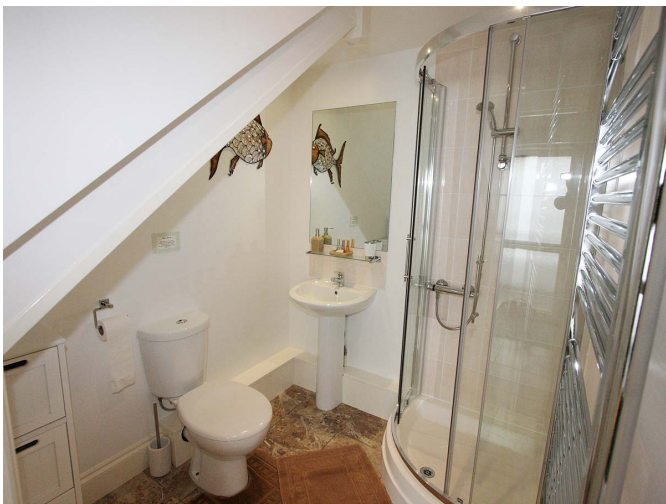


















Energy Efficiency Rating		
	Current	Potential
Very energy efficient - lower running costs		
(92-100) A		
(81-91) B		
(69-80) C		
(55-68) D		65
(39-54) E	50	
(21-38) F		
(1-20) G		
Not energy efficient - higher running costs		
England, Scotland & Wales		EU Directive 2002/91/EC 